



# Instructions

## ***SPARE TIRE PLATFORM ACCESSORY BRACKETS***

---

Thank you for purchasing the STP Accessory Brackets from AAL! We greatly appreciate your trust in our company. We take that purchase and your commitment to us very seriously. If you have any questions along the way, please don't hesitate to give us a call at 385.202.4188.

Please read these directions carefully before beginning the installation process.

### **Hardware Included**

- (8) M6 Button Head Bolts
- (8) M6 Lock Nuts

### **Tools Required:**

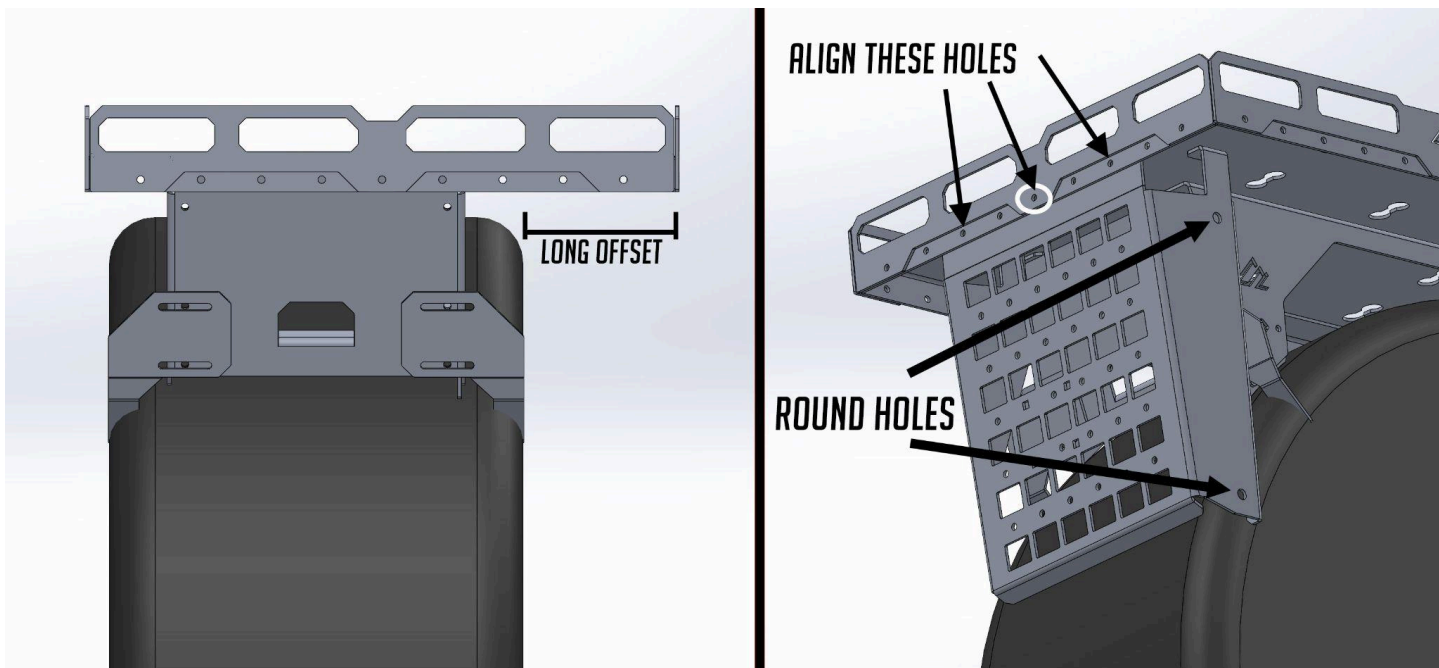
- 1/4" Drill Bit
- Drill
- Marker (Sharpie, etc.)
- 4mm Allen Wrench
- 10mm Wrench

## **Step 1 - Connect Bracket to Platform**

First, let's orient where the brackets attach. For simplicity's sake, let's start with the bracket on the driver's side of the vehicle. As you can see in the photo below, the flange of the Accessory Bracket that has the round holes in it should be positioned toward the long offset (rear) side of the platform. The platform is offset to one side to accommodate the MAXTRAX traction boards.

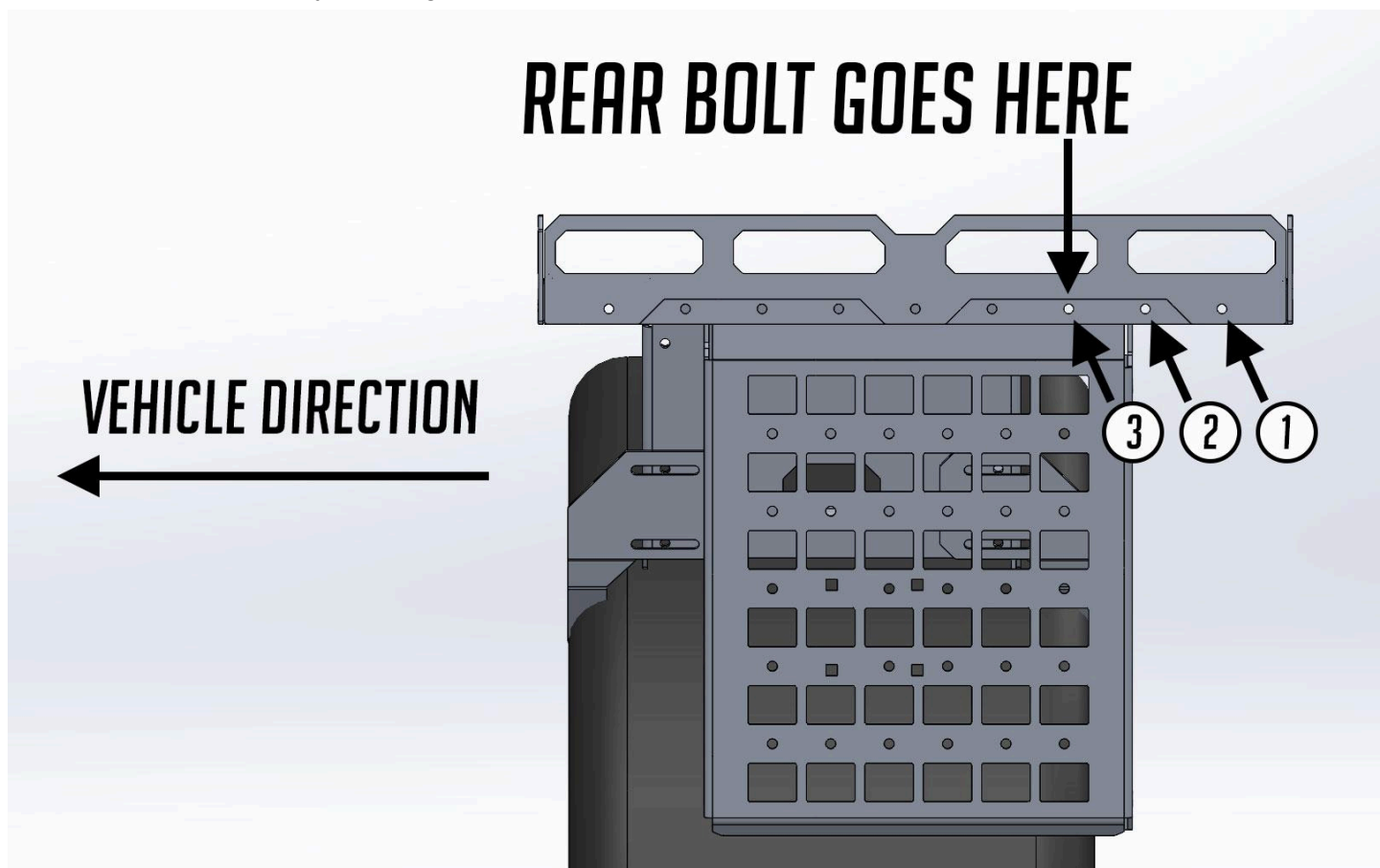
**NOTE:** If you are installing the brackets after installing the Edge Guards on the STP, you will need to remove the bolt and nut identified by the circle on the right-side diagram below before attaching the Accessory Brackets. If you are installing your brackets BEFORE installing your Edge Guards, you will need to leave this bolt out during these bracket installation steps. It can be reinstalled as part of the Edge Guard installation process. That's just a convoluted way of saying, "This bolt is in the way. Take it out". 🤪🤪🤪



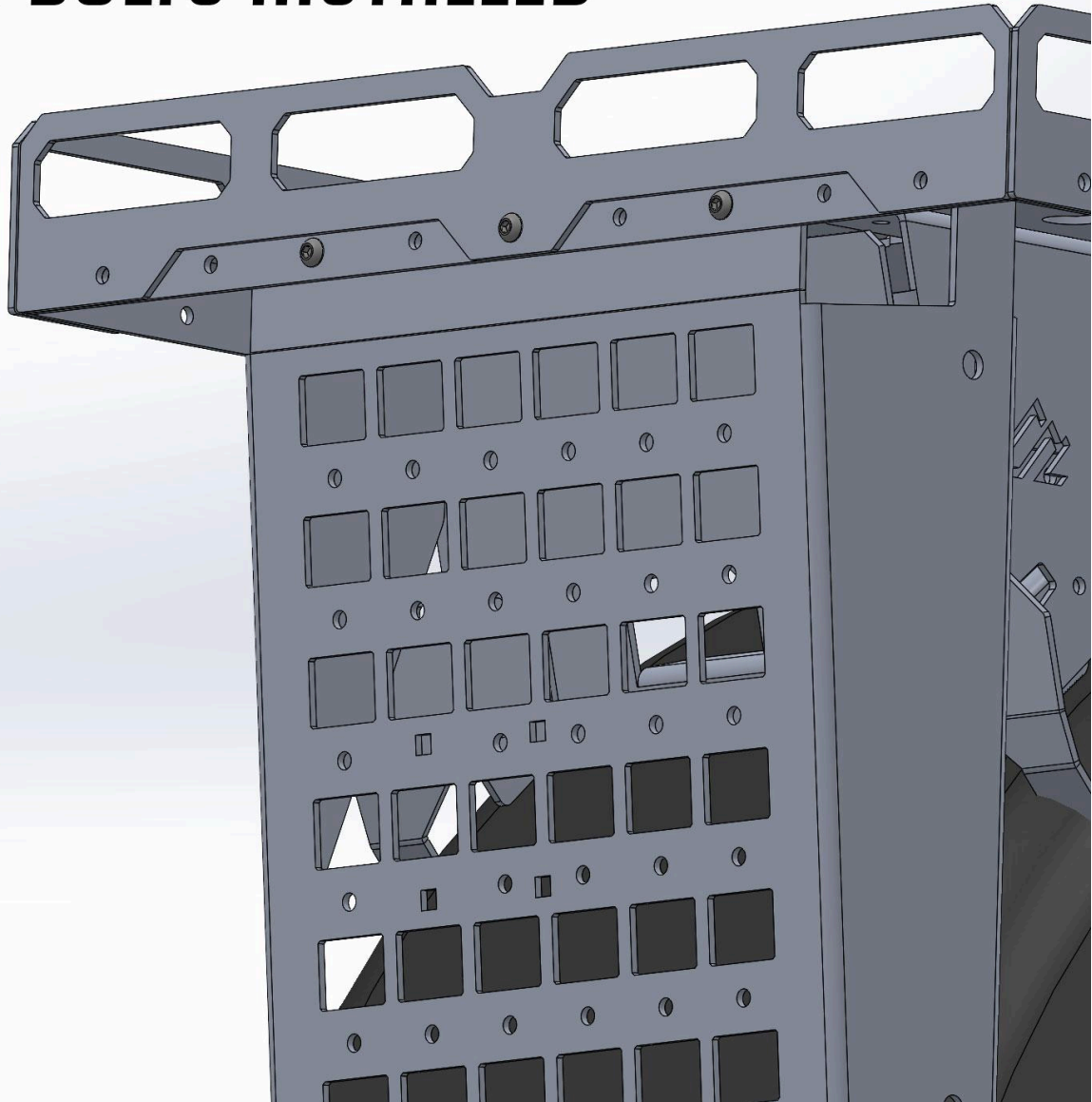


NOTE: It is very important to install into the correct holes before drilling the holes in the following step. Please see the large diagram below for a more detailed explanation. You will use the **third bolt hole** from the rear of the platform for the first bolt you install.

Once you have the bracket oriented as shown in these diagrams, you can install the provided bolts and nuts into the holes identified by the "Align These Holes" arrows above.



# WITH BOLTS INSTALLED



## Step 2 - Drill Holes

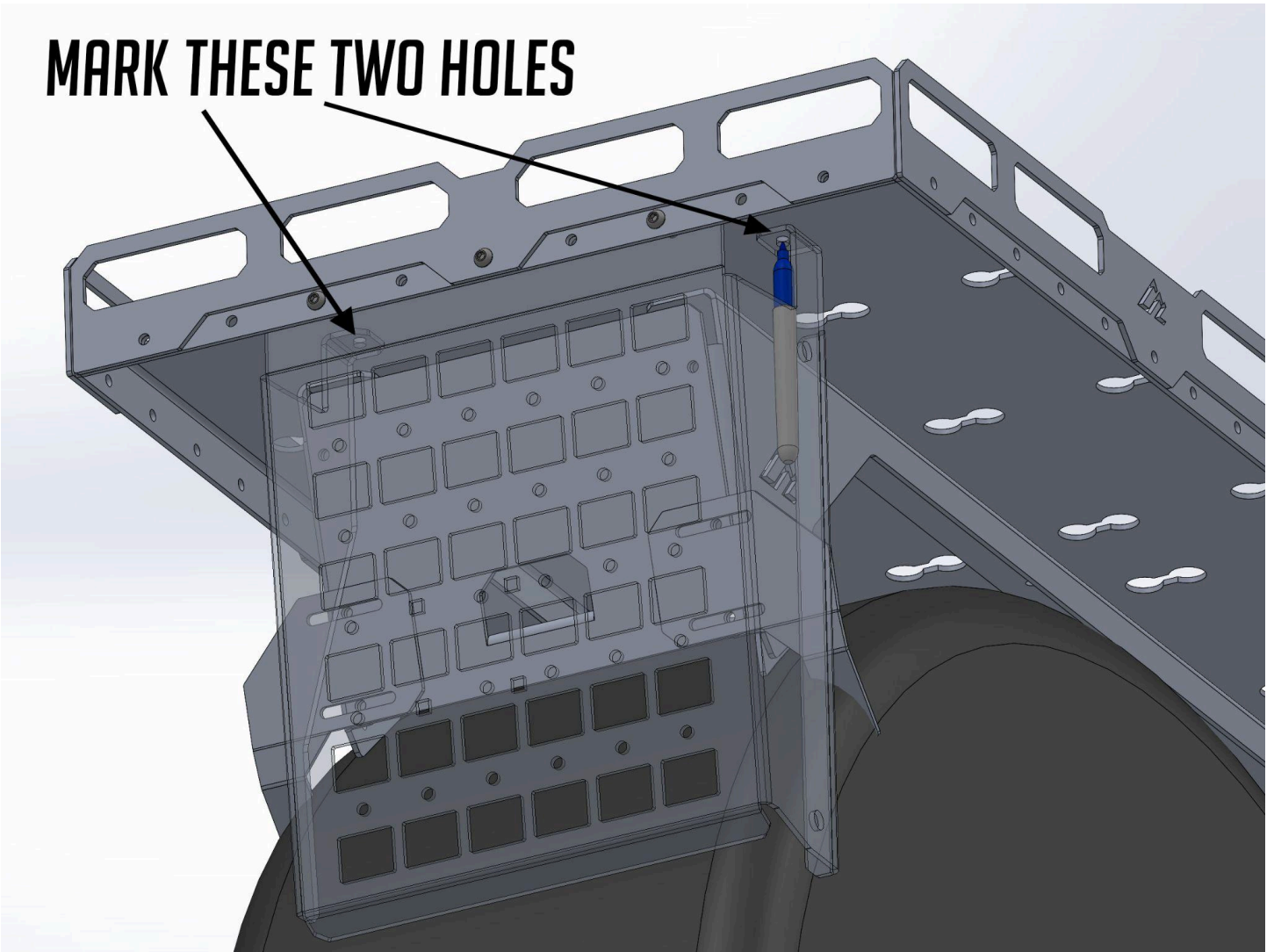
**NOTE:** If you are only running MAXTRAX on your STP Accessory Brackets, drilling these holes is optional. Later versions of the STP will have these, and other, holes pre-cut as the bracket options evolve.

Once you have the brackets bolted up and the bolts tightened, you can now mark the hole location on the bottom side of the platform. The Accessory Bracket is shown transparent below so it will be easier to see the location of the holes to mark with the marker. Insert the marker up from the bottom and mark each of the holes.

**NOTE:** Ensure the bracket flange is pushed all the way up against the bottom of the STP before marking the holes.



# MARK THESE TWO HOLES



Next, uninstall the Accessory Bracket to make it easier to get to the hole location with the drill.

Then, drill the two holes with the 1/4" drill bit and clean up the burs if necessary.

## Step 3: Reinstall Accessory Brackets

Repeat Step 1 above. In addition, you can now install bolts and nuts through the holes drilled in Step 2. The nuts should be on the bottom side of the platform.

## Step 4: Repeat for Opposing Side

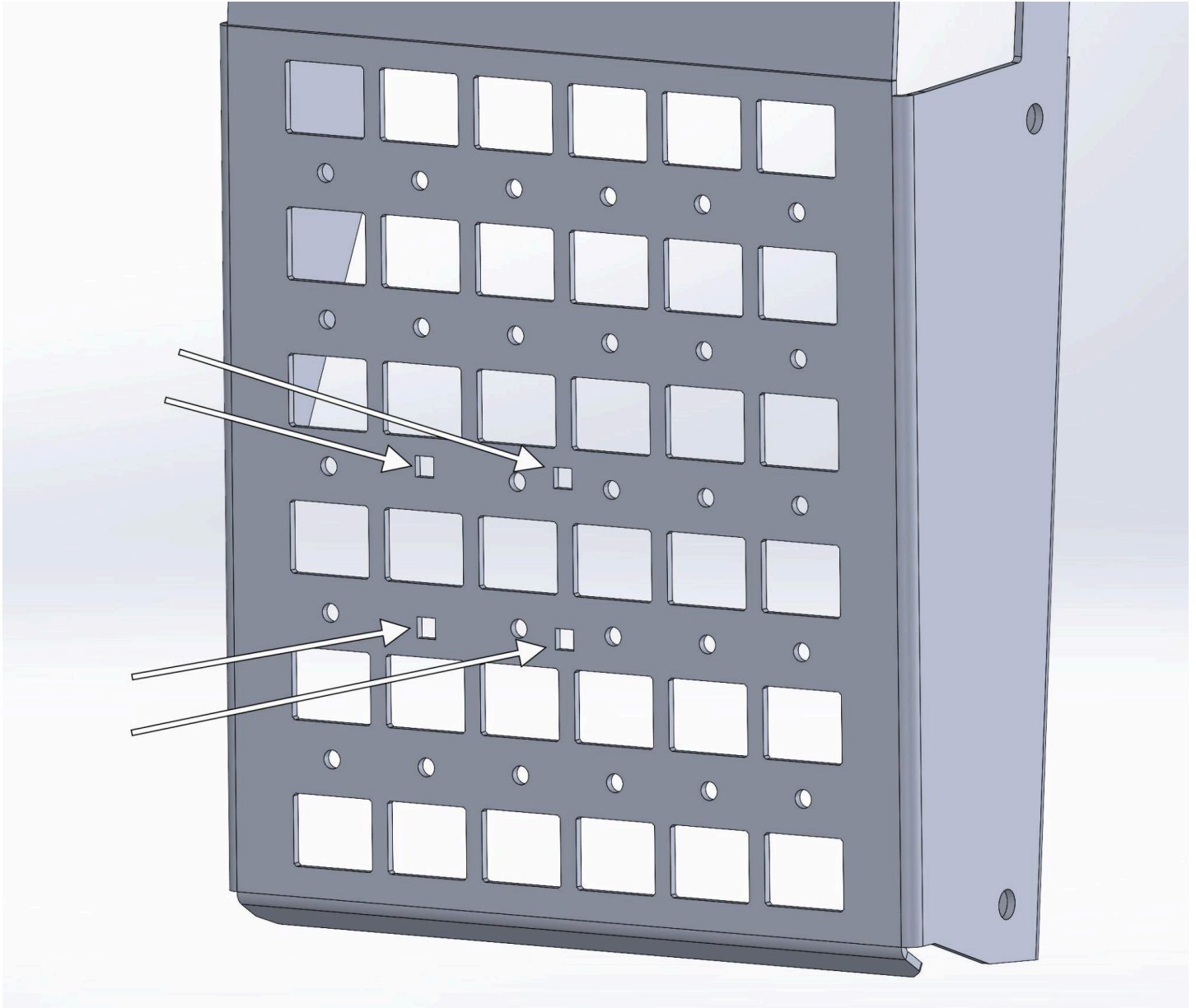
Repeat steps 1-3 for the passenger side Accessory Bracket.



## Step 5: Add Accessories

The round holes in the rear flanges of the Accessory Brackets are set up for the official MAXTRAX mounting pins. The installation for those is very straightforward. Please see their installation instructions for details.

If you would like to install Rotopax Standard Mounts, you can use the square holes in each of the Accessory Brackets you just installed to properly locate the mounts. The square holes in the Accessory Brackets line up with the carriage bolts Rotopax provides with their mounts. Square holes identified below.



## Step 6: Share Your Photos

We take great pride in building our products and we hope that pride extends to you after installing your STP Accessory Bracket. If you are able to share your photos online (Facebook and Instagram), please tag **@AmericanAdventureLab**. We would love to see how it turned out and give you some reciprocal attention in return!

**Congrats! You're all done!**

**Thank you!**

At American Adventure Lab, we strive to improve anywhere we can. If you experience any issues with this product or have any suggestions, please let us know.

If you have any questions or concerns, please don't hesitate to reach out to us at 385.202.4188 or via email at [Sales@AmericanAdventureLab.com](mailto:Sales@AmericanAdventureLab.com).

